

75F[®] Duct Sensor[™]

A high-precision, pre-calibrated duct temperature and humidity sensor



- Accurate temperature readings
- Accurate humidity readings
- Sleek design, low-impact aesthetics

75F® Duct Sensor™

75F's suite of sensor offerings gives building owners the power of IoT-connected devices for optimal efficiency and comfort in spaces where it matters most. Measure to manage with the 75F Wall Sensor, a high-precision temperature and humidity sensor that pairs with the 75F Smart Node to deliver data that influences equipment control. This device can be daisy chained with other sensors to provide an extensible sensor network.



OVERVIEW

The Duct Temperature and Humidity Sensor (DTH) is a high-precision sensor that is pre-calibrated from the factory. The DTH is easily mounted on a duct or VAV box by self-drilling screws. The sensor also has a secondary communication port to enable Daisy chain communication over the one-wire bus.

It comes with modular pipes that are approximately 4 and 6 inches long. This enables easy installation on variable duct thickness and sizes.

KEY FEATURES

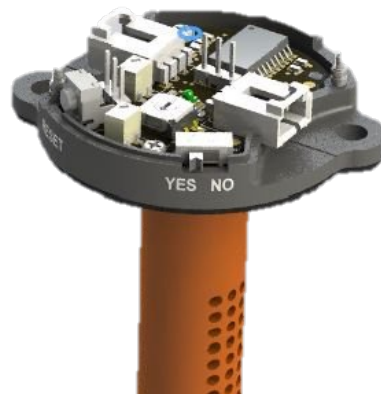
- Accurate temperature readings (typical +/-0.2C)
- Accurate humidity readings (typical +/- 2% R.H.)
- Proprietary 1-wire protocol to communicate with a master device such as the 75F® Smart Node™
- Can be daisy-chained with other sensors to provide extensible sensor network

ADDITIONAL FEATURES

- Sensor bus for power and communication
- Sleek design, low impact aesthetics
- Factory pre-calibrated
- Easily mounted

COMPATIBLE APPLICATIONS

- 75F® Dynamic Airflow Balancing™
- 75F® Outside Air Optimization™
- 75F® Smart VAV with Reheat™
- 75F® Single Stage Equipment™



75F[®] Duct Sensor[™]

MECHANICAL

Dimensions 5.49" x 1.37" (139.45mm x 34.8mm)

Mounting Duct mount

Operating Temperature 14°F – 122°F (-10°C – 50°C)

SENSORS

Temperature 14°F – 122°F (-10°C – 50°C); typical accuracy of +/- 1°F or 0.2°C

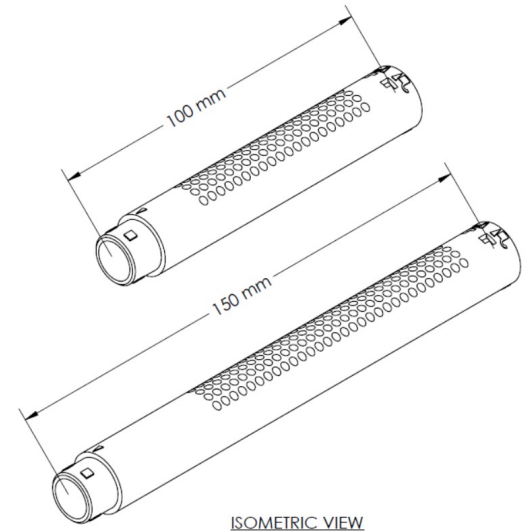
Humidity Sensing range between 0 to 100%RH; Typical accuracy of +/- 2% RH

ELECTRICAL

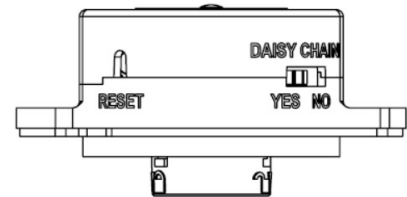
Power 3.3VDC (+/-10%)

COMMUNICATIONS

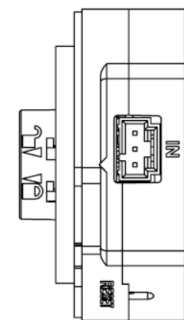
Wired Sensor bus for power and communication; proprietary 1 wire protocol to communicate with a master device



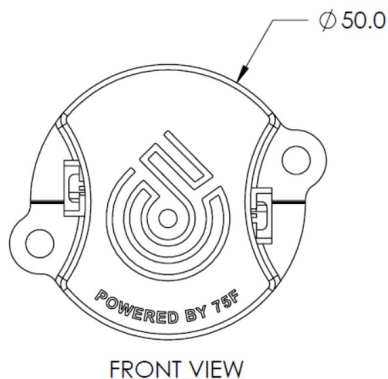
ISOMETRIC VIEW



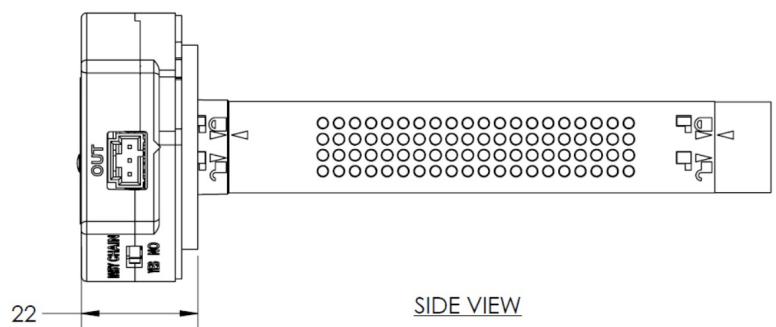
BOTTOM VIEW



SIDE VIEW



FRONT VIEW



SIDE VIEW